

**Antioch Comm High School**  
**CHSD 117**  
**Antioch, ILLINOIS**



**ILLINOIS**  
**SCHOOL**  
**REPORT**  
**CARD**

**GRADES : 9 10 11 12**

State and federal laws require public school districts to release report cards to the public each year.

Starting in 2009, charter school information is included in district statistics.

**STUDENTS**

RACIAL/ETHNIC BACKGROUND AND OTHER INFORMATION														
	White	Black	Hispanic	Asian/ Pacific Islander	Native American	Multi racial /Ethnic	Percent Low- Income	Percent Limited- English- Proficient	Percent IEP	High Sch. Dropout Rate	Chronic Truancy Rate	Mobility Rate	Attendance Rate	Total Enrollment
<b>School</b>	84.7	2.2	7.3	2.5	0.4	3.0	13.7	0.0	11.9	1.1	1.1	7.3	94.0	1,378
<b>District</b>	84.3	2.7	6.4	2.4	0.5	3.7	11.3	0.1	11.4	0.7	0.6	6.1	94.2	2,763
<b>State</b>	52.8	18.8	21.1	4.2	0.2	2.9	45.4	7.6	13.1	3.8	3.6	13.0	93.9	2,064,312

**Low-income** students come from families receiving public aid; live in institutions for neglected or delinquent children; are supported in foster homes with public funds; or are eligible to receive free or reduced-price lunches.

**IEP** Students are those students eligible to receive special education services.

**Limited-English-proficient** students are those students eligible for transitional bilingual programs.

**Mobility rate** is based on the number of times students enroll in or leave a school during the school year.

**Chronic truants** are students who are absent from school without valid cause for 18 or more of the last 180 school days.

**INSTRUCTIONAL SETTING**

PARENTAL CONTACT*		STUDENT-TO-STAFF RATIOS			
	Percent	Pupil- Teacher Elementary	Pupil- Teacher Secondary	Pupil- Certified Staff	Pupil- Administrator
<b>School</b>	99.4	--	--	--	--
<b>District</b>	99.5		17.1	11.7	121.9
<b>State</b>	96.2		18.2	13.3	203.8

\* Parental contact includes parent-teacher conferences, parental visits to school, school visits to home, telephone conversations, and written correspondence.

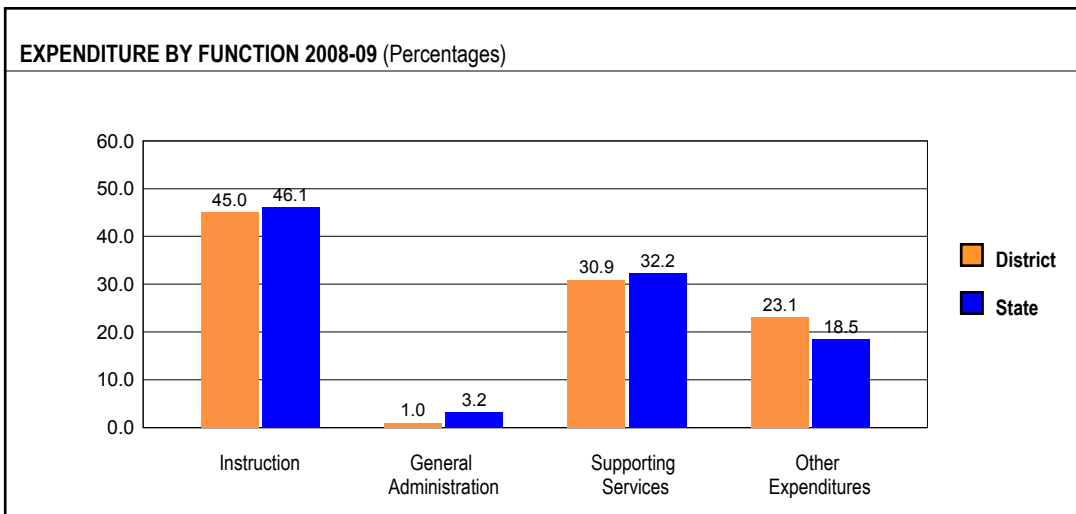
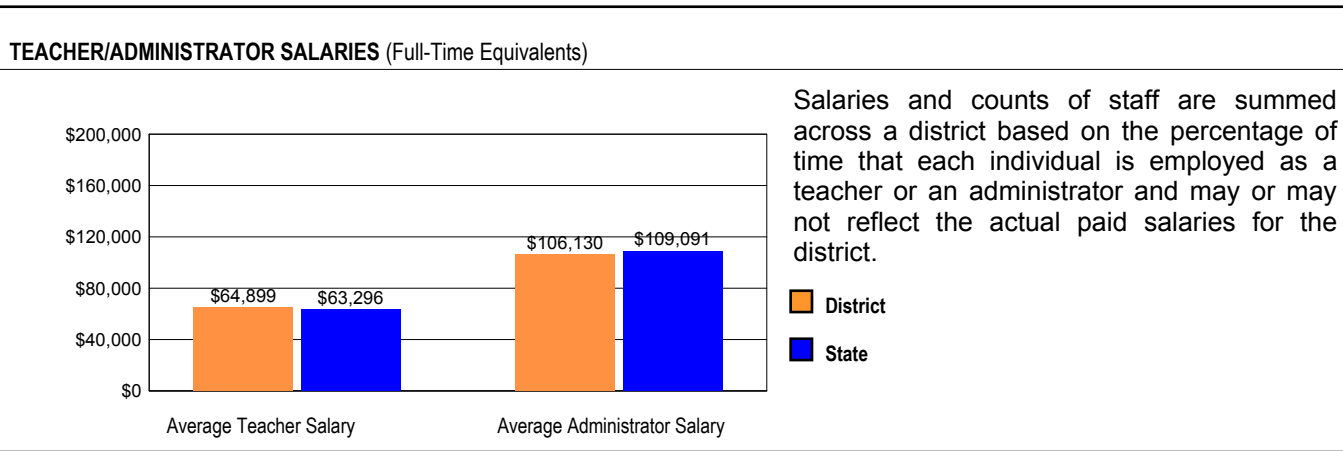
AVERAGE CLASS SIZE (as of the first school day in May)										
Grades	K	1	2	3	4	5	6	7	8	9 - 12
<b>School</b>										19.0
<b>District</b>										20.7
<b>State</b>										19.7

TEACHER INFORMATION (Full-Time Equivalents)								
	White	Black	Hispanic	Asian/ Pacific Islander	Native American	Male	Female	Total Number
<b>District</b>	95.0	2.0	1.0	1.5	0.5	43.9	56.1	199
<b>State</b>	85.2	8.1	5.2	1.4	0.2	23.0	77.0	132,502

TEACHER INFORMATION ( Continued )					
	Average Teaching Experience (Years)	% of Teachers with Bachelor's Degrees	% of Teachers with Master's & Above	% of Teachers with Emergency or Provisional Credentials	% of Classes Not Taught by Highly Qualified Teachers
School	--	--	--	0.0	0.0
District	10.6	42.4	56.6	0.5	0.0
State	12.7	42.2	57.4	0.5	0.7

Some teacher/administrator data are not collected at the school level.

## SCHOOL DISTRICT FINANCES



REVENUE BY SOURCE 2008-09				EXPENDITURE BY FUND 2008-09			
	District	District %	State %		District	District %	State %
Local Property Taxes	\$33,723,350	70.7	58.4	Education	\$31,041,697	65.4	69.6
Other Local Funding	\$3,824,118	8.0	6.9	Operations & Maintenance	\$4,286,291	9.0	7.9
General State Aid	\$2,000,852	4.2	14.5	Transportation	\$2,871,994	6.1	3.8
Other State Funding	\$7,067,841	14.8	8.3	Debt Service	\$8,443,727	17.8	7.0
Federal Funding	\$1,114,175	2.3	11.9	Tort	\$173,286	0.4	1.2
TOTAL	\$47,730,336			Municipal Retirement/ Social Security	\$612,771	1.3	1.8
				Fire Prevention & Safety	\$0	0.0	0.8
				Site & Construction/ Capital Improvement	\$0	0.0	7.9
				TOTAL	\$47,429,766		

OTHER FINANCIAL INDICATORS				
	2007 Equalized Assessed Valuation per Pupil	2007 Total School Tax Rate per \$100	2008-09 Instructional Expenditure per Pupil	2008-09 Operating Expenditure per Pupil
District	\$568,968	2.36	\$8,626	\$15,788
State	**	**	\$6,483	\$11,197

\*\* Due to the way Illinois school districts are configured, state averages for equalized assessed valuation per pupil and total school tax rate per \$100 are not provided.

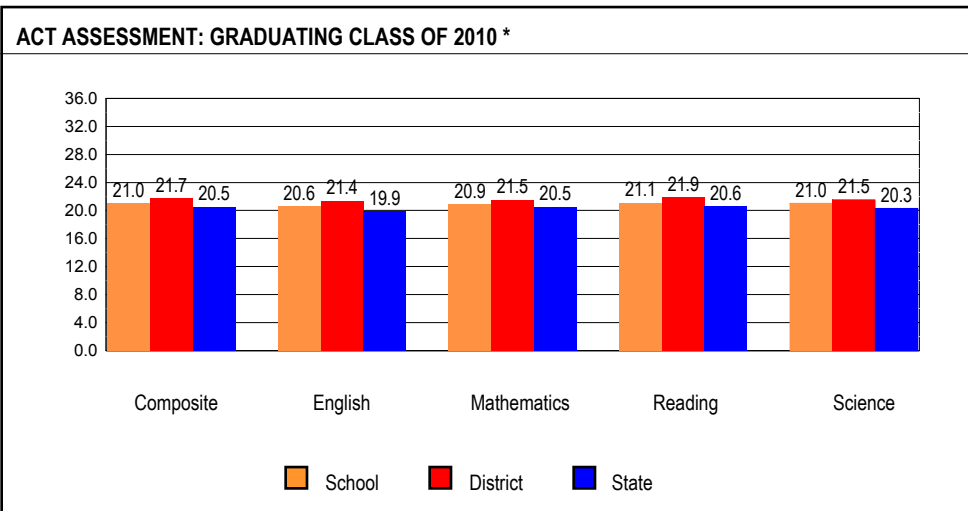
Equalized assessed valuation includes all computed property values upon which a district's local tax rate is calculated.

Total school tax rate is a district's total tax rate as it appears on local property tax bills.

Instructional expenditure per pupil includes the direct costs of teaching pupils or the interaction between teachers and pupils.

Operating expenditure per pupil includes the gross operating cost of a school district excluding summer school, adult education, bond principal retired, and capital expenditures.

## ACADEMIC PERFORMANCE



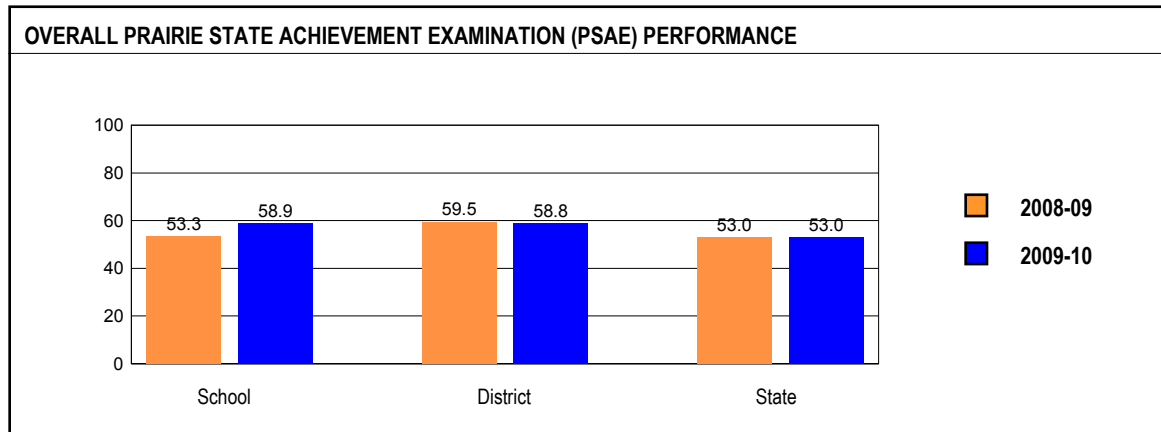
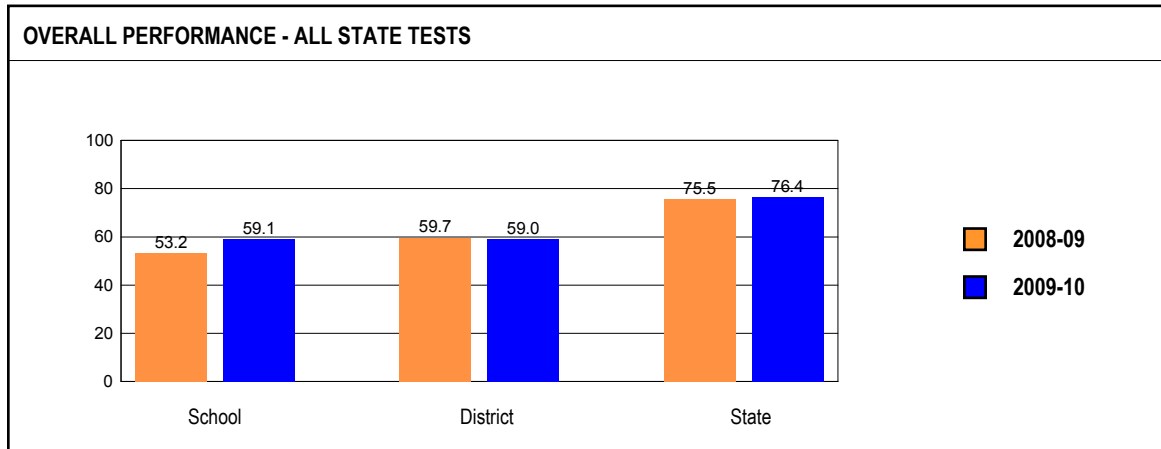
The number and percent of students taking the ACT are no longer reported since virtually every eleventh grade student takes the ACT as part of the PSAE.

\* Includes graduating students' most recent ACT Assessment scores from an ACT national test date or PSAE testing. Excludes the scores of students who took the test with special accommodations. State averages for ACT data are based on regular public schools and do not include private and special purpose schools.

HIGH SCHOOL GRADUATION RATE													
	Gender			Race / Ethnicity						LEP	Migrant	Students with Disabilities	Economically Disadvantaged
	All	Male	Female	White	Black	Hispanic	Asian/Pacific Islander	Native American	Multi racial /Ethnic				
School	91.0	88.4	93.7	90.1	100.0	100.0	100.0	0.0	100.0			80.0	100.0
District	93.6	91.4	95.8	93.5	87.5	95.1	94.7	75.0	100.0			83.7	95.3
State	87.8	87.3	88.4	93.3	78.0	79.4	95.0	86.0	89.5			78.2	79.3

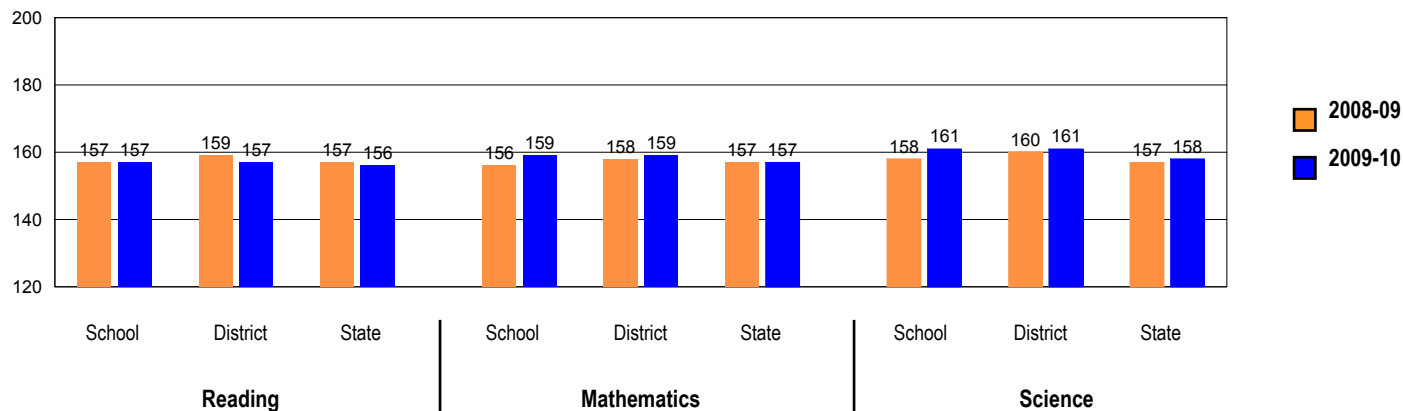
**OVERALL STUDENT PERFORMANCE**

These charts present the overall percentages of state test scores categorized as meeting or exceeding the Illinois Learning Standards for your school, district, and the state. They represent your school's performance in reading, mathematics, and science.

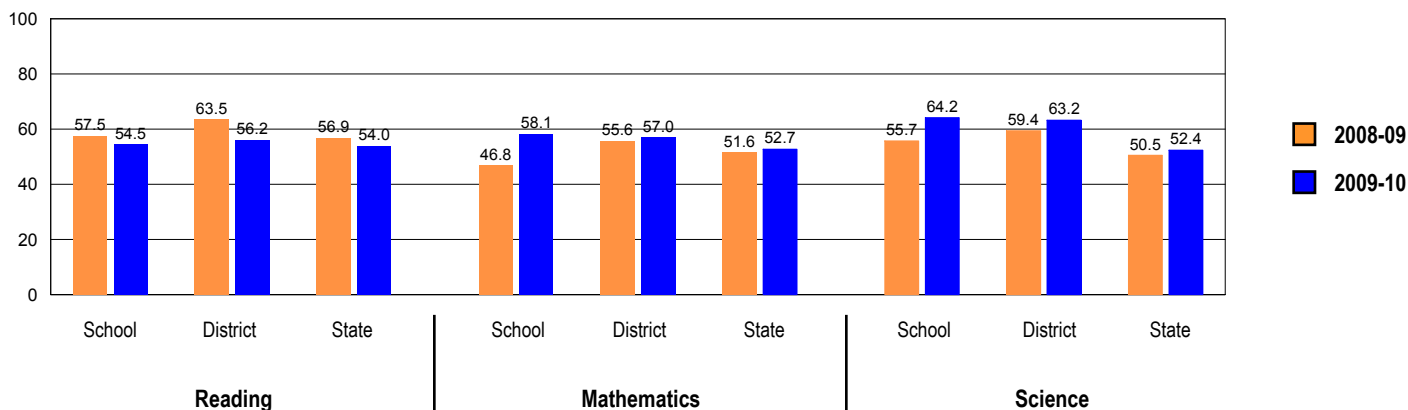


**PSAE PERFORMANCE**

These charts provide information on attainment of the Illinois Learning Standards. They show the average scores and also the percents of student scores meeting or exceeding standards in reading, mathematics, and science on PSAE.

**PRAIRIE STATE ACHIEVEMENT EXAMINATION (PSAE) - Average Scores**

PSAE scores range from 120 to 200.

**PRAIRIE STATE ACHIEVEMENT EXAMINATION (PSAE) - Percents Meeting or Exceeding Standards**

Number of students in this school with PSAE scores in 2010: 327

**PERFORMANCE ON STATE ASSESSMENTS**

Federal law requires that student achievement results for reading, mathematics, and science for schools providing Title I services be reported to the general public.

The Illinois Standards Achievement Test (ISAT) is administered to students in grades 3 through 8. The Prairie State Achievement Examination (PSAE) is administered to students in grade 11. The Illinois Alternate Assessment (IAA) is administered to students with disabilities whose Individualized Education Programs (IEPs) indicate that participation in the ISAT or PSAE would not be appropriate.

Students with disabilities have an IEP (No Child Left Behind Act). An IEP is a written plan for a child with a disability who is eligible to receive special education services under the Individuals with Disabilities Education Act.

Reading and Mathematics are tested in grades 3 through 8 and 11. Science is tested in grades 4, 7, and 11.

In order to protect students' identities, test data for groups of fewer than ten students are not reported.

PERCENTAGE OF STUDENTS NOT TESTED IN STATE TESTING PROGRAMS FOR READING AND MATHEMATICS														
		Gender			Racial/Ethnic Background						LEP	Migrant	Students with Disabilities	Economically Disadvantaged
		All	Male	Female	White	Black	Hispanic	Asian/Pacific Islander	Native American	Multi racial /Ethnic				
School	*Enrollment	330	173	157	271	7	29	10	2	11	1	0	38	50
	Reading Mathematics	0.0 0.0	0.0 0.0	0.0 0.0	0.0 0.0		0.0 0.0	0.0 0.0		0.00 0.00			0.0 0.0	0.0 0.0
District	*Enrollment	662	353	309	543	21	53	17	4	24	2	0	84	90
	Reading Mathematics	0.3 0.3	0.3 0.3	0.3 0.3	0.4 0.4	0.0 0.0	0.0 0.0	0.0 0.0		0.0 0.0			2.4 2.4	1.1 1.1
State	*Enrollment	1,068,202	545,784	522,252	565,375	199,071	219,899	44,975	2,039	36,134	67,911	346	150,721	503,002
	Reading Mathematics	0.2 0.2	0.3 0.3	0.2 0.2	0.1 0.1	0.5 0.5	0.2 0.2	0.2 0.2	0.2 0.2	0.2 0.2	0.3 0.3	0.9 0.9	0.5 0.5	0.3 0.3

\* Enrollment as reported during the testing windows for grades 3 - 8 and 11.

PERCENTAGE OF STUDENTS NOT TESTED IN STATE TESTING PROGRAMS FOR SCIENCE ONLY														
		Gender			Racial/Ethnic Background						LEP	Migrant	Students with Disabilities	Economically Disadvantaged
		All	Male	Female	White	Black	Hispanic	Asian/Pacific Islander	Native American	Multi racial /Ethnic				
School	*Enrollment	330	173	157	271	7	29	10	2	11	1	0	38	50
	Science	0.0	0.0	0.0	0.0		0.0	0.0		0.0			0.0	0.0
District	*Enrollment	662	353	309	543	21	53	17	4	24	2	0	84	90
	Science	0.3	0.3	0.3	0.4	0.0	0.0	0.0		0.0			2.4	1.1
State	*Enrollment	449,149	228,523	220,563	244,235	81,931	88,351	19,309	898	14,165	23,830	105	62,715	201,259
	Science	0.4	0.5	0.3	0.2	1.0	0.5	0.3	0.4	0.3	0.5	1.9	0.9	0.6

\* Enrollment as reported during the testing windows for grades 4, 7, and 11.

**PRAIRIE STATE ACHIEVEMENT EXAMINATION (PSAE)**

The following tables show the percentages of student scores in each of four performance levels. These levels were established with the help of Illinois educators who teach the grade levels and learning areas tested. Due to rounding, the sum of the percentages in the four performance levels may not always equal 100.

- Level 1 -- Academic Warning - Student work demonstrates limited knowledge and skills in the subject. Because of major gaps in learning, students apply knowledge and skills ineffectively.
- Level 2 -- Below Standards - Student work demonstrates basic knowledge and skills in the subject. However, because of gaps in learning, students apply knowledge and skills in limited ways.
- Level 3 -- Meets Standards - Student work demonstrates proficient knowledge and skills in the subject. Students effectively apply knowledge and skills to solve problems.
- Level 4 -- Exceeds Standards - Student work demonstrates advanced knowledge and skills in the subject. Students creatively apply knowledge and skills to solve problems and evaluate the results.

**Grade 11****Grade 11 - All**

Levels	Reading				Mathematics				Science			
	1	2	3	4	1	2	3	4	1	2	3	4
School	8.3	37.2	46.8	7.7	5.5	36.4	47.7	10.4	4.9	30.9	52.6	11.6
District	8.9	34.9	48.8	7.4	6.6	36.4	48.7	8.3	6.0	30.8	52.5	10.7
State	9.0	37.0	44.1	9.9	10.6	36.7	42.4	10.3	9.7	37.9	41.6	10.8

**Grade 11 - Gender**

Levels	Reading				Mathematics				Science				
	1	2	3	4	1	2	3	4	1	2	3	4	
Male	School	10.7	39.1	45.6	4.7	5.3	34.1	47.6	12.9	4.7	29.4	52.4	13.5
	District	12.5	34.9	46.5	6.1	7.5	35.1	46.4	11.0	7.5	29.3	49.6	13.6
	State	11.3	37.3	41.9	9.5	10.9	34.2	42.4	12.5	10.2	34.6	41.5	13.7
Female	School	5.8	35.3	48.1	10.9	5.7	38.9	47.8	7.6	5.1	32.5	52.9	9.6
	District	4.9	34.9	51.5	8.8	5.5	38.0	51.3	5.2	4.2	32.5	55.8	7.5
	State	6.8	36.7	46.2	10.2	10.4	39.1	42.4	8.1	9.3	41.1	41.7	7.9

**Grade 11 - Racial/Ethnic Background**

Levels	Reading				Mathematics				Science				
	1	2	3	4	1	2	3	4	1	2	3	4	
White	School	7.9	35.2	47.9	9.0	5.2	34.2	49.1	11.5	3.7	29.4	54.6	12.3
	District	7.9	34.3	49.3	8.6	4.7	35.3	50.9	9.1	4.5	29.3	54.7	11.6
	State	5.3	29.0	52.2	13.5	5.7	29.6	51.0	13.8	4.8	29.4	50.9	14.9
Black	School												
	District	33.3	19.0	47.6	0.0	38.1	33.3	28.6	0.0	33.3	28.6	28.6	9.5
	State	17.1	55.2	26.0	1.6	26.0	53.5	19.5	0.9	23.1	57.2	18.8	0.9
Hispanic	School	3.4	72.4	24.1	0.0	6.9	51.7	41.4	0.0	6.9	48.3	44.8	0.0
	District	9.4	58.5	30.2	1.9	15.1	52.8	32.1	0.0	11.3	47.2	39.6	1.9
	State	15.6	51.2	30.7	2.5	15.5	50.7	31.4	2.4	16.1	54.0	27.5	2.4
Asian/Pacific Islander	School												
	District	12.5	31.3	56.3	0.0	0.0	31.3	50.0	18.8	12.5	37.5	43.8	6.3
	State	6.0	28.2	48.7	17.1	3.6	19.0	50.4	27.0	4.5	24.5	49.8	21.3
Native American	School												
	District												
	State	8.3	37.0	43.9	10.9	10.6	37.3	42.6	9.6	10.2	37.6	42.9	9.2
Multiracial/Ethnic	School	9.1	9.1	72.7	9.1	9.1	36.4	45.5	9.1	0.0	27.3	36.4	36.4
	District	8.7	8.7	78.3	4.3	8.7	30.4	52.2	8.7	0.0	17.4	65.2	17.4
	State	7.2	35.4	46.0	11.4	9.3	38.1	43.6	9.0	8.0	37.1	44.4	10.5

**Grade 11 - Students with Disabilities**

Levels	Reading				Mathematics				Science				
	1	2	3	4	1	2	3	4	1	2	3	4	
IEP	School	33.3	51.5	12.1	3.0	28.6	57.1	14.3	0.0	31.4	57.1	8.6	2.9
	District	41.3	46.7	10.7	1.3	32.5	54.5	13.0	0.0	36.4	54.5	7.8	1.3
	State	40.1	42.7	14.8	2.4	45.8	40.9	12.2	1.2	42.1	43.9	11.9	2.1
Non-IEP	School	5.5	35.6	50.7	8.2	2.7	33.9	51.7	11.6	1.7	27.7	57.9	12.7
	District	4.7	33.3	53.8	8.2	3.1	34.0	53.5	9.4	1.9	27.6	58.5	12.0
	State	5.2	36.3	47.7	10.8	6.3	36.2	46.2	11.4	5.7	37.2	45.3	11.8

**Grade 11 - Economically Disadvantaged**

Levels	Reading				Mathematics				Science				
	1	2	3	4	1	2	3	4	1	2	3	4	
Free/Reduced Price Lunch	School	14.3	51.0	32.7	2.0	14.0	52.0	32.0	2.0	12.0	44.0	42.0	2.0
	District	21.8	41.4	34.5	2.3	20.5	52.3	25.0	2.3	18.2	44.3	34.1	3.4
	State	16.4	51.7	29.5	2.4	20.1	50.9	27.0	2.0	18.9	54.0	25.1	2.1
Not Eligible	School	7.2	34.8	49.3	8.7	4.0	33.6	50.5	11.9	3.6	28.5	54.5	13.4
	District	6.9	33.9	51.1	8.2	4.4	34.0	52.4	9.2	4.1	28.7	55.4	11.9
	State	5.0	29.0	52.1	14.0	5.5	28.9	50.9	14.8	4.7	29.1	50.6	15.5

## 2010 ADEQUATE YEARLY PROGRESS (AYP) Status Report

Is this school making Adequate Yearly Progress (AYP)?	No	Has this school been identified for School Improvement according to the AYP specifications of the federal No Child Left Behind Act?	Yes
Is this school making AYP in Reading?	No	2010-11 Federal Improvement Status	Choice SES
Is this school making AYP in Mathematics?	No	2010-11 State Improvement Status	Academic Early Warning Year 2

	Percent Tested on State Tests				Percent Meeting/Exceeding Standards *						Other Indicators			
	Reading		Mathematics		Reading			Mathematics			Attendance Rate		Graduation Rate	
	%	Met AYP	%	Met AYP	%	Safe Harbor Target **	Met AYP	%	Safe Harbor Target **	Met AYP	%	Met AYP	%	Met AYP
<b>State AYP Minimum Target</b>	95.0		95.0		77.5			77.5			91.0		80.0	
<b>All</b>	100.0	Yes	100.0	Yes	55.3		No	59.2		No			91.0	Yes
<b>White</b>	100.0	Yes	100.0	Yes	57.6	64.9	No	61.2	54.1	Yes			90.1	
<b>Black</b>														
<b>Hispanic</b>														
<b>Asian/Pacific Islander</b>														
<b>Native American</b>														
<b>Multiracial /Ethnic</b>														
<b>LEP</b>														
<b>Students with Disabilities</b>														
<b>Economically Disadvantaged</b>	100.0	Yes	100.0	Yes	36.2		No	31.3		No				

### Four Conditions Are Required For Making Adequate Yearly Progress (AYP):

1. At least 95% tested in reading and mathematics for every student group. If the current year participation rate is less than 95%, this condition may be met if the average of the current and preceding year rates is at least 95%, or if the average of the current and two preceding years is at least 95%. Only actual participation rates are printed. If the participation rate printed is less than 95% and yet this school makes AYP, it means that the 95% condition was met by averaging.
2. At least 77.5% meeting/exceeding standards in reading and mathematics for every group. For any group with less than 77.5% meeting/exceeding standards, a 95% confidence interval was applied. Subgroups may meet this condition through Safe Harbor provisions. \*\*\*
3. At least 91% attendance rate for non-high schools and at least 80% graduation rate for high schools.

\* Includes only students enrolled as of 05/01/2009.

\*\* Safe Harbor Targets of 77.5% or above are not printed.

\*\*\* Subgroups with fewer than 45 students are not reported. Safe Harbor only applies to subgroups of 45 or more. In order for Safe Harbor to apply, a subgroup must decrease by 10% the percentage of scores that did not meet state standards from the previous year plus meet the other indicators (attendance rate for non-high schools and graduation rate for high schools) for the subgroup. For subgroups that do not meet their Safe Harbor Targets, a 75% confidence interval is applied. Safe Harbor allows schools an alternate method to meet subgroup minimum targets on achievement.

## 2010 DIFFERENTIATED ACCOUNTABILITY CLASSIFICATION

The Differentiated Accountability classification for the school is:	Comprehensive
Is this school making (AYP) in the "ALL" subgroup in <b>reading</b> ?	No
Is this school making (AYP) in the "ALL" subgroup in <b>math</b> ?	No

In 2008, the Illinois State Board of Education (ISBE) was one of 6 states to be chosen by the US Department of Education to participate on the Differentiated Accountability Pilot Program. The Differentiated Accountability classification **applies only to schools in federal improvement status that do not make AYP**.

The classification is a descriptor (i.e., focused or comprehensive) that is added to a school's improvement status. Current Title I requirements do not change. The classification assists in distinguishing between schools that need focused supports verses more comprehensive interventions.

If a school does make AYP in ALL-student group in both reading and math, this school will be classified as a focused school; otherwise, the school will be identified as a comprehensive school.